



## Receptacles

For DIN tab terminals



Figure	Part number	Wire size mm <sup>2</sup> (AWG)	Ø Insulation (mm)	For male (mm)	Din	Brass	Brass Pre-Sn	Brass Sn	Bronze	Bronze Pre-Sn	Bronze Sn	Bronze Ag	Material thickness (mm)	Winding number
						00	01	02	30	31	32	33		
End feed Receptacles														
	<b>4400D**</b>	<b>0,1-0,3</b> (26-22)	1-1,8	2,8x0,3	Esp	•		•	•		•		0,25	15000
	<b>4402D**</b>			2,8x0,5	46247	•		•	•		•			
	<b>4404D**</b>			2,8x0,8	46247	•		•	•		•			
	<b>4406D**</b>	<b>0,5-1</b> (20-18)	1,8-2,5	2,8x0,3	Esp	•		•	•		•			
	<b>4408D**</b>			2,8x0,5	46247	•		•	•		•			
	<b>4410D**</b>			2,8x0,8	46247	•		•	•		•	•		

Figure	Part number	Wire size mm <sup>2</sup> (AWG)	Ø Insulation (mm)	For male (mm)	Din	Brass	Brass Pre-Sn	Brass Sn	Bronze	Bronze Pre-Sn	Bronze Sn	Bronze Ag	Material thickness (mm)	Winding number	
						00	01	02	30	31	32	33			
Side feed receptacles															
	<b>4605D**</b>	<b>0,3-0,6</b> (22-20)	1,5-2 FLR	2,8x0,5	46247	•	•		•	•			0,3	8000	
	<b>4606D**</b>			2,8x0,8		•	•		•	•					
	<b>4607D**</b>	<b>0,5-1</b> (20-18)	1,8-2,5	2,8x0,5		•	•		•	•		•			7000
	<b>4608D**</b>			2,8x0,8		•	•		•	•					

## Receptacles

For standard tabs. Rear dimple



Figure	Part number	Wire size mm <sup>2</sup> (AWG)	Ø Insulation (mm)	For male (mm)	Din	Brass	Brass Pre-Sn	Brass Sn	Brass Ni	Bronze	Bronze Pre-Sn	Bronze Sn	Material thickness (mm)	Winding number
						00	01	02	04	30	31	32		
End feed Receptacles														
	<b>4400.**</b>	<b>0,1-0,3</b> (26-22)	1-1,8	2,8x0,3	Esp	•		•		•		•	0,25	15000
	<b>4402.**</b>			2,8x0,5		•		•		•				
	<b>4404.**</b>			2,8x0,8		•		•		•				
	<b>4406.**</b>	2,8x0,3	•			•		•						
	<b>4408.**</b>	<b>0,5-1</b> (20-18)	1,8-2,5	2,8x0,5		•		•		•				
	<b>4410.**</b>		2,8x0,8	•			•		•					

Side feed receptacles														
	<b>4605.**</b>	<b>0,3-0,6</b> (22-20)	1,5-2 FLR	2,8x0,5	Esp	•	•			•	•		0,3	8000
	<b>4606.**</b>			2,8x0,8		•	•			•	•			
	<b>4607.**</b>	<b>0,5-1</b> (20-18)	1,8-2,5	2,8x0,5		•		•		•				
	<b>4608.**</b>			2,8x0,8		•		•		•				
	<b>4605E**</b>	<b>0,75-1,5</b> (18-16)	3,2 Máx	2,8x0,5		•		•		•				
	<b>4608E**</b>			2,8x0,8		•		•		•				
													6000	

## Receptacles

### Unlockable

Figure	Part number	Wire size mm <sup>2</sup> (AWG)	Ø Insulation (mm)	For male (mm)	Brass	Brass Sn	Steel Ni	Bronze	Bronze Sn	Material thickness (mm)	Winding number
					00	02	24	30	32		
	<b>4503.**</b>	<b>0,1-0,3</b> (26-22)	1-1,8	2,8x0,5	•	•		•	•	0,25	15000
	<b>4511.**</b>			2,8x0,8	•	•		•	•		
	<b>4508.**</b>	<b>0,5-1</b> (20-18)	1,8-2,5	2,8x0,5	•	•	•			0,3	
	<b>4509.**</b>			2,8x0,8	•	•	•				



### Receptacle housings

Figure	Part number	Ways	Dimensions	To terminal	Politiene Natural	PA66V2 Natural	PA66V0 Natural	PA66NF Natural	NO FLAME Natural
					00	10	30	40	40
	<b>22820**</b>	1	3,7-5,5-18	4408.00	•	•			
	<b>22810**</b>	1	4-5-20	4408.00		•	•		•
	<b>22811**</b>	1	4-5-25	4408.00		•			

## Receptacles

### Receptacle housings

Figure	Part number	Ways	Dimensions	To terminal	Politilene Natural	PA66V2 Natural	PA66V0 Natural	PA66NF Natural	NO FLAME Natural
					00	10	30	40	40
	Short Housing								
	<b>22812**</b>	1				•	•	•	

## Receptacles for connector

### Standard Terminals

Figure	Part number	Wire size mm <sup>2</sup> (AWG)	Ø Insulation (mm)	For male (mm)	Din	Brass 00	Brass Pre-Sn 01	Brass Sn 02	Bronze 30	Bronze Pre-Sn 31	Bronze Sn 32	Material thickness (mm)	Winding number	
	End feed Receptacles													
	<b>4300.**</b>	<b>0,1-0,3</b> (26-22)	1-1,8	2,8x0,3	Esp	•		•	•		•	0,25	15000	
	<b>4302.**</b>			2,8x0,5		•		•	•		•			
	<b>4304.**</b>			2,8x0,8		•		•	•		•			
	<b>4306.**</b>	<b>0,5-1</b> (20-18)	1,8-2,5	2,8x0,3	46340	•		•	•		•			
	<b>4308.**</b>			2,8x0,5		•		•	•		•			
<b>4310.**</b>	2,8x0,8			•			•	•		•				
	Side feed receptacles													
	<b>4105.**</b>	<b>0,3-0,6</b> (22-20)	1,5-2 FLR	2,8x0,5	46340	•	•		•	•		0,3	8000	
	<b>4106.**</b>			2,8x0,8		•	•		•	•				
	<b>4107.**</b>	<b>0,5-1</b> (20-18)	1,8-2,5	2,8x0,5		•	•		•	•			7000	
	<b>4108.**</b>			2,8x0,8		•	•		•	•				
	<b>4105E**</b>	<b>0,75-1,5</b> (18-16)	3,2 Máx	2,8x0,5		•	•		•	•			6000	
<b>4108E**</b>	2,8x0,8			•		•		•	•					

## Receptacles for connector

### Standard Terminals

Figure	Part number	Wire size mm <sup>2</sup> (AWG)	Ø Insulation (mm)	For male (mm)	Din	Brass	Brass Pre-Sn	Brass Sn	Bronze	Bronze Pre-Sn	Bronze Sn	Material thickness (mm)	Winding number
						00	01	02	30	31	32		
	Multidimble side feed receptacles												



### Receptacle Connectors

Figure	Part number	Ways	Dimensions	PA66V2	PA66V0	PA66NF
				10	30	40
	<b>22850**</b>	1		Natural	Natural	Natural
	<b>22852**</b>	2	11,2-5,7-18	Natural	Natural	Natural
	<b>22843**</b>	3		Natural	Natural	Natural

## Receptacles for connector

### Receptacle Connectors

Figure	Part number	Ways	Dimensions	PA66V2	PA66V0	PA66NF
	3 ways Secondary Lock			Natural	Natural	Natural
	<b>22873**</b>	3		10	30	40

## Males

### 2.5 x 0.5 mm Flag Male

Figure	Part number	Wire size mm <sup>2</sup> (AWG)	Ø Insulation (mm)	Tongue thickness (mm)	Brass Pre-Sn	Material thickness (mm)	Winding number
	<b>6451.**</b>	<b>0,22-0,35</b> (24-22)	1-1,8	0,5	01	0,25	10000

## Males

### Short tab

Figure	Part number	Wire size mm <sup>2</sup> (AWG)	Ø Insulation (mm)	Tongue thickness (mm)					Material thickness (mm)	Winding number
					Brass 00	Brass Pre-Sn 01	Bronze 30	Bronze Pre-Sn 31		
	<b>6507.**</b>	<b>0,2-0,5</b> (24-20)	1,4-2,1	0,8	<input type="checkbox"/>	<input type="checkbox"/>	<input type="checkbox"/>	<input type="checkbox"/>	0,4	12000
	<b>6508.**</b>	<b>0,5-1</b> (20-18)	1,8-3,3		<input type="checkbox"/>	<input type="checkbox"/>	<input checked="" type="checkbox"/>	<input type="checkbox"/>		



### 2.8 x 0.8 mm Male Flag

Figure	Part number	Wire size mm <sup>2</sup> (AWG)	Ø Insulation (mm)	Tongue thickness (mm)			Material thickness (mm)	Winding number
					Brass 00	Brass Pre-Sn 01		
	<b>6509.**</b>	<b>0,2-0,5</b> (24-20)	1,4-2,1	0,8	<input type="checkbox"/>	<input type="checkbox"/>	0,4	6500
	<b>6509E**</b>	<b>0,5-1</b> (20-18)	1,8-3,3		<input type="checkbox"/>	<input type="checkbox"/>		





## Males

Tab terminal 89101424 ring

Figure	Part number	Wire size mm <sup>2</sup> (AWG)	∅ Insulation (mm)	Tongue thickness (mm)	Brass	Material thickness (mm)	Winding number
	<b>6504.**</b>	<b>0,5-1,5</b> (20-16)	2 Max	0,8	•	0,4	4000
	<b>6506.**</b>	<b>1-2</b> (18-14)	2,2 Max				



## Males for connector

Automotive male

Figure	Part number	Wire size mm <sup>2</sup> (AWG)	∅ Insulation (mm)	Tongue thickness (mm)	Brass Pre-Sn	Material thickness (mm)	Winding number
	<b>6503.**</b>	<b>0,35-1</b> (22-18)	1,3-2	0,8	•	0,4	7000
	<b>6505.**</b>	<b>1-3</b> (18-12)	2-3,2				5000



## Males for connector

### Automotive Male2

Figure	Part number	Wire size mm <sup>2</sup> (AWG)	∅ Insulation (mm)	Tongue thickness (mm)	Bronze Pre-Sn 31	Material thickness (mm)	Winding number
	<b>6502.**</b>	<b>0,22-0,35</b> (24-22)	=<1,4	0,8	•	0,4	7000
	<b>6501.**</b>	<b>0,5-1</b> (20-18)	1,4-2,3				6000
	<b>6409.**</b>	<b>0,5-1,5</b> (20-16)	1,8-2,9				4000
	<b>6411.**</b>	<b>1-2,5</b> (18-14)					4500



### Standard Tab

Figure	Part number	Wire size mm <sup>2</sup> (AWG)	∅ Insulation (mm)	Tongue thickness (mm)	Brass 00	Brass Pre-Sn 01	Bronze 30	Bronze Pre-Sn 31	Material thickness (mm)	Winding number
WITH hole and WITH side stops										
	<b>6407.**</b>	<b>0,5-1</b> (20-18)	1,4-2,3	0,8	•	•	•	•	0,4	5000
	<b>6403.**</b>		2,3-3,3							
WITHOUT hole and WITH side stops										
	<b>6400.**</b>	<b>0,5-1</b> (20-18)	1,4-2,3	0,8	•	•	•	•	0,4	5000
	<b>6404.**</b>		2,3-3,3							
	<b>6406.**</b>		3,4 SEAL							
	<b>6408.**</b>	<b>1-2,5</b> (18-14)	1,8-2,9							
	<b>6410.**</b>	<b>1-3</b> (18-12)	3-4,3							



## Males for connector

### Standard Tab

Figure	Part number	Wire size mm <sup>2</sup> (AWG)	Ø Insulation (mm)	Tongue thickness (mm)	Brass	Brass Pre-Sn	Bronze	Bronze Pre-Sn	Material thickness (mm)	Winding number
					00	01	30	31		
WITH Hole and WITHOUT side stops										
	<b>6402F**</b>	<b>0,3-0,6</b> (22-20)	1,4-2,3	0,8		•			0,4	5000
	<b>6401.**</b>	<b>0,5-1</b> (20-18)	2,3-3,3			•	•			
WITHOUT Hole and WITHOUT Side stops										
	<b>6402E**</b>	<b>0,3-0,6</b> (22-20)	1,4-2,3	0,8	•	•	•	•	0,4	5000
	<b>6402.**</b>	<b>0,5-1</b> (20-18)	2,3-3,3		•	•	•	•		
	<b>6408E**</b>	<b>1-2,5</b> (18-14)	1,8-2,9		•	•	•	•		4000



## Males for connector

### Connectors

Figure	Part number	Ways	Dimensions	PA66V2 Natural	PA66V2 Black	PA66V2 Brown	PA66V2 Gray
	<b>22840**</b>	1		10	15	18	
	1 way Connector						
				•			
	<b>21002**</b>	2					
	2 ways Connector						
					•		
	<b>22841**</b>	2	13,5-8,3-25,4				
	T 2 ways connector						
				•			
	<b>22853**</b>	3					
	3 ways connector						
						•	
	<b>21016**</b>	16 (8x2)					
	16 ways Connector						
					•		

## Males for connector

### Connectors

Figure	Part number	Ways	Dimensions	PA66V2	PA66V2	PA66V2	PA66V2
				10	15	18	Natural
	Central Polarization						
	<b>2100817</b>	8				•	
	Left Polarization						
	<b>2100815</b>	8			•		

## Receptacles

### Standard Terminals

Figure	Part number	Wire size mm <sup>2</sup> (AWG)	Ø Insulation (mm)	For male (mm)	Din	Brass	Brass Sn	Brass Ni	Steel Ni	Bronze	Bronze Sn	Material thickness (mm)	Winding number
						00	02	04	24	30	32		
	<b>4412.**</b>	<b>0,5-1</b> (20-18)	1,8-2,5	4,8x0,5	46247	•	•	•	•	•	•	0,35	10000
	<b>4414.**</b>			4,8x0,8		•	•	•	•	•			
	<b>4416.**</b>	<b>1-2,5</b> (18-14)	3-4,3	4,8x0,5		•	•	•	•	•	•		
	<b>4418.**</b>			4,8x0,8		•	•	•	•	•	•		



### Receptacle housings

Figure	Part number	Ways	Dimensions	To terminal	Politiilene Natural	PA66V2 Natural	PA66V0 Natural	PA66V0 Black	PAVONF Natural	
					00	10	30	35	60	
	Special Housing					•	•			
	<b>24820**</b>	1	4,5-7,5-20	4414.00						
	Standard Housing						•	•	•	•
	<b>24812**</b>	1	5,5-7,5-19,5	4414.00						

## Receptacles for connector

### Standard Terminals

Figure	Part number	Wire size mm <sup>2</sup> (AWG)	Ø Insulation (mm)	For male (mm)	00	02	30	32	Material thickness (mm)	Winding number
					Brass	Brass Sn	Bronze	Bronze Sn		
	<b>4312.**</b>	<b>0,5-1</b> (20-18)	1,8-2,5	4,8x0,5	•	•	•	•	0,3	10000
	<b>4314.**</b>			4,8x0,8	•	•	•	•		
	<b>4316.**</b>	<b>1-2,5</b> (18-14)	3-4,3	4,8x0,5	•	•	•	•		
	<b>4318.**</b>			4,8x0,8	•	•	•	•		



### Receptacle housings

Figure	Part number	Ways	To terminal	PA66V2	PA66V0	PAMF
				Natural	Natural	Natural
	<b>24850**</b>	1	4312.00	•	•	•

## Flags

### Flag receptacle housings

Figure	Part number	Ways	Dimensions	Material
	<b>24830**</b>	1	4-7,2-15,5	PA66V2 Natural
	<b>24831**</b>	1	4-7,2-13	PA66V2 Natural



## Males

### Standard Terminals

Figure	Part number	Wire size mm <sup>2</sup> (AWG)	Ø Insulation (mm)	Tongue thickness (mm)	Material		Material thickness (mm)	Winding number
					00 Brass	01 Brass Pre-Sn		
	<b>6412.**</b>	<b>0,5-1</b> (20-18)	1,8-2,5	0,5	•	•	0,5	4500
	<b>6413.**</b>	<b>0,75-2</b> (18-14)	2,5-3,5		•	•		4000



## Males for connector

### Standard Terminals

Figure	Part number	Wire size mm <sup>2</sup> (AWG)	Ø Insulation (mm)	Tongue thickness (mm)	Material			Material thickness (mm)	Winding number
					00 Brass	01 Brass Pre-Sn	02 Brass Sn		
	<b>6416.**</b>	<b>0,5-1</b> (20-18)	1,8-2,5	0,5	•	•	•	0,5	8000



## Males for connector

### Tab Housings

Figure	Part number	Ways	To terminal	PA66V2 Natural	PA66V0 Natural	NO FLAME Natural	Winding number
	<b>24840**</b>	1	6416.00	•	•	•	10000

## Receptacles

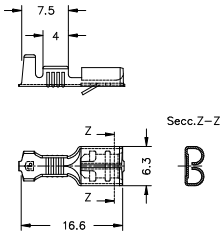
### Standard Terminals



Figure	Part number	Wire size mm <sup>2</sup> (AWG)	∅ Insulation (mm)	For male (mm)	Brass 00	Brass Sn 02	Bronze 30	Bronze Sn 32	Material thickness (mm)	Winding number	
	Standard Terminal										
	4476.**	1-2,5 (18-14)	3-4,3	5x0,5	•	•	•	•	0,4	8000	
4466.**	5x0,8			•	•	•	•				
	Short Terminal										
	4472.**	1-2,5 (18-14)	3-4,3	5x0,5	•	•	•	•	0,4	9000	
4468.**	5x0,8			•	•	•	•				

## Receptacles for connector

### Standard Terminals

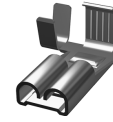
Figure	Part number	Wire size mm <sup>2</sup> (AWG)	Ø Insulation (mm)	For male (mm)	Brass	Brass Sn	Bronze	Bronze Sn	Material thickness (mm)	Winding number
					00	02	30	32		
	<b>4370.**</b>	<b>1-2,5</b> (18-14)	3-4,3	5,2x0,8(1)	•	•	•	•	0,4	9000



## Flags

### Standard Terminals

Figure	Part number	Wire size mm <sup>2</sup> (AWG)	Ø Insulation (mm)	For male (mm)	Brass	Brass Sn	Bronze	Bronze Sn	Material thickness (mm)	Winding number
					00	02	30	32		
	<b>5472.**</b>	<b>0,5-1,5</b> (20-16)	2-3,3	5x0,5	•	•	•	•	0,4	3000
	<b>5476.**</b>			5x0,8	•	•	•	•		



## Flags for connector

### Standard Terminals

Figure	Part number	Wire size mm <sup>2</sup> (AWG)	Ø Insulation (mm)	For male (mm)	Brass	Brass Sn	Bronze	Bronze Sn	Material thickness (mm)	Winding number
					00	02	30	32		
	5372.**	0,5-1,5 (20-16)	2-3,3	5x0,5	•	•	•	•	0,4	3000
	5376.**			5x0,8	•	•	•	•		



## Males

### Standard Terminals

Figure	Part number	Wire size mm <sup>2</sup> (AWG)	Ø Insulation (mm)	Tongue thickness (mm)	Brass	Brass Pre-Sn	Brass Sn	Bronze	Bronze Pre-Sn	Material thickness (mm)	Winding number
					00	01	02	30	31		
	<b>6768.**</b>	<b>0,5-1</b> (20-18)	1,5-2,1	5x0,8	•	•		•	•	0,4	5000
	<b>6772.**</b>		1,8-2,5		•	•		•	•		
	<b>6776.**</b>	<b>1-3</b> (18-12)	3-4,3		•	•		•	•		
	Short Terminal										
	<b>6466.**</b>	<b>1-2,5</b> (18-14)	3-4,3	5x0,8	•	•	•			0,4	7000



## Males

### Tab Housings

Figure	Part number	Ways	To terminal	PA66V2 Natural	PA66V0 Natural
	<b>24841**</b>	1	6466.00	•	•



## Receptacles

### Standard Terminals



Figure	Part number	Wire size mm <sup>2</sup> (AWG)	Ø Insulation (mm)	For male (mm)	Din	Brass 00	Brass Sn 02	Steel Ni 24	Bronze 30	Bronze Sn 32	Bronze Ag 33	German Silver 70	Material thickness (mm)	Winding number
	<b>4420F**</b>	<b>0,2-0,6</b> (24-20)	1,4-2,1	6,3x0,8	Esp	•	•	•	•	•			0,4	8000
	<b>4420.**</b>	<b>0,5-1</b> (20-18)	1,8-2,5			•	•	•	•	•		•		
	<b>4422.**</b>	<b>1-2,5</b> (18-14)	3-4,3			•	•	•	•	•				
	<b>4425.**</b>	<b>2,5-6</b> (14-10)	3,8-5			•	•	•	•	•				
	Short Terminal					46249	•	•	•	•	•		0,4	8000
	<b>4541.**</b>	<b>0,2-0,6</b> (24-20)	1,4-2,1	6,3x0,8	Esp	•	•	•	•	•				
	<b>4540.**</b>	<b>0,5-1</b> (20-18)	1,8-2,5			•	•	•	•	•				
	<b>4542.**</b>	<b>1-2,5</b> (18-14)	3-4,3			•	•	•	•	•				
<b>4544.**</b>	<b>2-5</b> (14-10)	3,8-5	•			•	•	•	•					
	FLR Special terminal					Esp	•	•	•	•			0,4	8000
	<b>4424.**</b>	<b>0,5-1</b> (20-18)	1,5-2,1	6,3x0,8										
	Low cost version					Esp	•	•	•	•			0,4	8000
	<b>4648.**</b>	<b>1-2,5</b> (18-14)	3-4,3	6,3x0,8										

## Receptacles

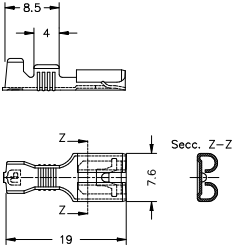
### Standard Terminals

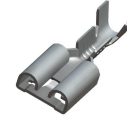


Figure	Part number	Wire size mm <sup>2</sup> (AWG)	Ø Insulation (mm)	For male (mm)	Din	Brass	Brass Sn	Steel Ni	Bronze	Bronze Sn	Bronze Ag	German Silver	Material thickness (mm)	Winding number
						00	02	24	30	32	33	70		
Without insulation Crimping														
	<b>4646.**</b>	<b>0,5-1,5</b> (20-16)		6,3x0,8	Esp	•	•	•	•	•			0,4	8000
	<b>4622.**</b>	<b>0,3-0,6</b> (22-20)	1,4-2,1	6,3x0,8	Esp	•	•						0,32	9000
	<b>4626.**</b>	<b>0,5-1</b> (20-18)	1,8-2,5			8000								
	<b>4628.**</b>	<b>1-2,5</b> (18-14)	3-4,3											

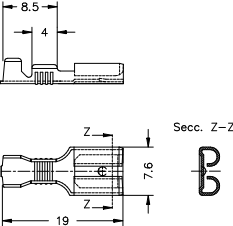
## Receptacles

### Unlockable

Figure	Part number	Wire size mm <sup>2</sup> (AWG)	Ø Insulation (mm)	For male (mm)	Brass	Brass Sn	Bronze	Bronze Sn	Material thickness (mm)	Winding number
					00	02	30	32		
	<b>4520.**</b>	<b>0,5-1</b> (20-18)	1,8-2,5	6,3x0,8	•	•	•	•	0,4	8000
	<b>4521.**</b>	<b>1-2,5</b> (18-14)	3-4,3		•	•	•	•		7000



### Overmoulding

Figure	Part number	Wire size mm <sup>2</sup> (AWG)	Ø Insulation (mm)	For male (mm)	Brass	Brass Sn	Material thickness (mm)	Winding number
					00	02		
	<b>4548.**</b>	<b>0,5-1</b> (20-18)	1,8-2,5	6,3x0,8	•	•	0,4	8000



## Receptacles

### Receptacle housings

Figure	Part number	Ways	Dimensions	To terminal	00	10	15	30	33	35	45	40	50	55	60
	Special Housing				Politilene Natural	PA66V2 Natural	PA66V2 Black	PA66V0 Natural	PA66V0 Red	PA66V0 Black	PA66NF Black	PANF Natural	Stanyl Natural	Stanyl Black	PAVONF Natural
	<b>26313**</b>	1	5-9-24,5	4420.00		•	•								
	Standard Housing														
	<b>26310**</b>	1	5-9-25	4420.00		•	•	•	•	•	•	•	•	•	•
	For vibration cup														
	<b>26316**</b>	1					•								•
	Side opening														
	<b>26311**</b>	1	5-9-25	4420.00		•									
	Rear entry														
	<b>26320**</b> <b>26321**</b>	1	5-9-22 5-9-24	4420.00	• •	• •									

## Receptacles for connector

### Standard Terminals

Figure	Part number	Wire size mm <sup>2</sup> (AWG)	Ø Insulation (mm)	For male (mm)	Din	Brass	Brass Sn	Bronze	Bronze Sn	Material thickness (mm)	Winding number		
						00	02	30	32				
SEAL													
	<b>4330.**</b>	<b>1,5-2,5</b> (16-14)	SEAL	6,3x0,8	Esp	•	•	•	•	0,4	3000		
With dimple													
	<b>4321.**</b>	<b>0,5-1</b> (20-18)	1,5-2,1	6,3x0,8	Esp	•	•	•	•	0,4	8000		
	<b>4323.**</b>		1,8-3,3		46340	•	•	•	•				
	<b>4325.**</b>	<b>1-2,5</b> (18-14)	1,8-2,9		Esp	•	•	•	•		7000		
	<b>4327.**</b>		3-4,3		46340	•	•	•	•				
	<b>4344.**</b>		<b>2,5-6</b> (14-10)		3,8-5	46340	•	•	•			•	4000
	<b>4346.**</b>				3,8-5	46340	•	•	•			•	
Without dimple													
	<b>4331.**</b>	<b>0,5-1</b> (20-18)	1,5-2,1	6,3x0,8	Esp	•	•	•	•	0,4	8000		
	<b>4332E**</b>		1,8-3,3		46340	•	•	•	•			0,35	
	<b>4333.**</b>		1,8-3,3		46340	•	•	•	•				
	<b>4333K**</b>	<b>1-2,5</b> (18-14)	1,8-2,9		Esp	•	•	•	•	0,35	7000		
	<b>4335.**</b>		1,8-2,9		46340	•	•	•	•				
	<b>4336E**</b>		3-4,3		46340	•	•	•	•			0,4	
	<b>4337.**</b>		3-4,3		46340	•	•	•	•				
	<b>4337K**</b>	<b>2,5-6</b> (14-10)	3,8-5		46340	•	•	•	•	4000			
<b>4348.**</b>	3,8-5		46340	•	•	•	•						

## Receptacles for connector

### Standard Terminals

Figure	Part number	Wire size mm <sup>2</sup> (AWG)	∅ Insulation (mm)	For male (mm)	Din	Brass 00	Brass Sn 02	Bronze 30	Bronze Sn 32	Material thickness (mm)	Winding number				
	0.32 mm material														
	4322.**	0,3-0,6 (22-20)	1,4-2,1	6,3x0,8	Esp	•	•			0,32	9000				
	4322K.**										8000				
	4326.**	0,5-1 (20-18)	1,8-2,5								•	•			
	4326K.**										•	•			
4328.**	1-2,5 (18-14)	3-4,3	•								•				
4328K.**			•	•											



### Receptacle Connectors

Figure	Part number	Ways	Dimensions	To terminal	PA66V2 Natural 10	ABS Gray 28	PA66V0 Natural 30	NO FLAME Natural 40	PANF Natural 40	Stanyl Natural 50	PAVONF Natural 60
	Single line Connector										
	26351.**	1	6,3-10-23	4323.00	•						
	2 ways Connector										
	26374.**	2	10,2-12,5-23	4323.00	•						
	Unstepped 2 ways connector										
	26352.**	2	10-13-23	4323.00	•						

## Receptacles for connector

### Receptacle Connectors

Figure	Part number	Ways	Dimensions	To terminal	PA66V2 Natural	ABS Gray	PA66V0 Natural	NO FLAME Natural	PANF Natural	Stanyl Natural	PAVONF Natural
	<b>26378**</b>	2	16,6-10-23	4323.00	•						
T 2 ways connector											
	<b>26375**</b>	2	10,2-12,5-23	4323.00	•						
Polarized 2 ways connector											
	<b>26353**</b>	3	16,7-12,5-23	4323.00	•		•		•	•	•
3 ways connector											
	<b>26354**</b>	4	14-23-24	4323.00	•						
4 ways Connector											
	<b>26356**</b>	6	15,2-28,5-24	4323.00	•		•	•			•
6 ways Connector											

## Receptacles for connector

### Receptacle Connectors

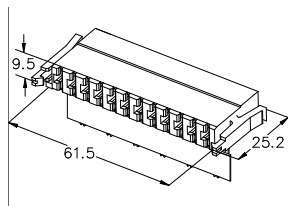
Figure	Part number	Ways	Dimensions	To terminal	PA66V2 Natural	ABS Gray	PA66V0 Natural	NO FLAME Natural	PANF Natural	Stanyl Natural	PA6ONF Natural
	<b>26386**</b>	6	15,2-28,5-24	4323.00	•						
Panel connector 6 ways											
	<b>26397**</b>	6 (3x2)	12,5-28,5-25	4327.00		•					
6 ways 3x2 Female Connector											
	<b>26358**</b>	8	15,2-38-24	4333.00	•						
8 ways Connector											
	<b>26390**</b>	10 (5x2)	10-65-24	4332.00	•						
10 ways Connector											
	<b>26380**</b>	11	26,5-29,5-23	4323.00	•						
11 way connector											



## Receptacles for connector

### Receptacle Connectors

Figure



12 ways Connector

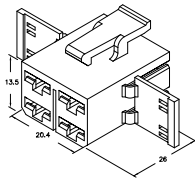
**26387\*\***

12

9,5-61,5-25,2

4323.00

PA66V2	Natural	PA66V0	Natural	PANF	Natural	Stanyl	Natural	PAVONF	Natural
28	ABS	30	Gray	40	NO FLAME	40	50	60	



Secondary Lock

**26355\*\***

4

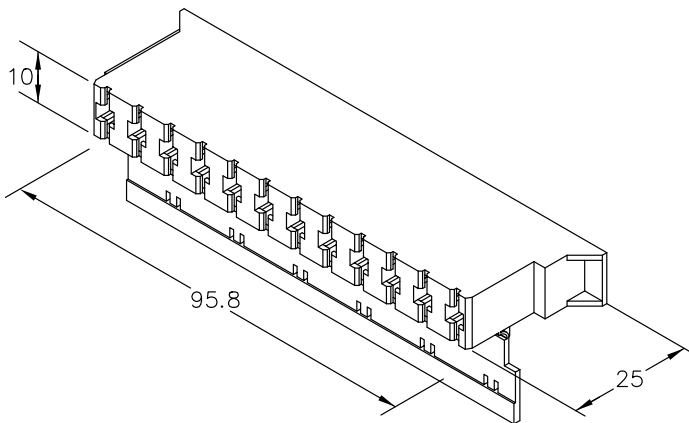
•		•	•						
---	--	---	---	--	--	--	--	--	--

7,2 mm 12 ways connector

**26357\*\***

12

•		•	•						
---	--	---	---	--	--	--	--	--	--



## Flags

### Standard Terminals

Figure	Part number	Wire size mm <sup>2</sup> (AWG)	Ø Insulation (mm)	For male (mm)	Din									Material thickness (mm)	Winding number
						Brass 00	Brass Sn 02	Brass Ag 03	Steel Ni 24	Bronze 30	Bronze Pre-Sn 31	Bronze Sn 32	Bronze Ag 33		
	<b>5428.**</b>	<b>0,3-0,75</b> (22-18)		6,3x0,8	Esp	•	•			•		•		0,45	5000
	<p>Special Flag</p>														
	<b>5420.**</b>	<b>0,5-1</b> (20-18)	1,8-2,5	6,3x0,8	43346	•	•			•	•		•	0,4	5000
	<b>5422.**</b>	<b>1-2,5</b> (18-14)	3-4,3			•	•			•	•		•		4000
<p>Long Flag</p>															
<p>Short Flag. rolling crimp</p>															
	<b>5424.**</b>	<b>0,5-1,5</b> (20-16)	1,9-3,3	6,3x0,8	43346	•	•	•	•	•		•		0,4	3000
	<b>5426.**</b>	<b>1-2,5</b> (18-14)	2,7-3,8			•	•		•	•		•			2000
<p>Short Flag. B crimping</p>															
	<b>5427.**</b>	<b>0,5-0,75</b> (20-18)	1,9-3,3	6,3x0,8	Esp	•	•		•	•		•		0,4	3500
	<b>5429.**</b>	<b>0,5-1,5</b> (20-16)				•	•		•	•		•			
	<b>5430.**</b>	<b>1-2,5</b> (18-14)				2,7-3,8	•	•		•	•		•		

## Flags

### Flag receptacle housings

Figure	Part number	Ways	To terminal	PA66V2 Natural	PA66V2 Black	PA66V0 Natural	PA66V0 Black	PA66NF Natural	PA66NF Red	NO FLAME Natural	Stanyl Natural	PA66 GWT750°C Natural	PAV0NF Natural	PAV0NF Black	
	<b>26331**</b>	1	5420.00-54	•		•		•			•		•		
	<b>26332**</b>		5424.00-54	•		•	•	•					•		
	<b>26432**</b>		5424-5426-	•		•				•					
	<b>26330**</b>	1	5420.00-54	•	•	•	•	•	•		•		•	•	

## Flags for connector

### Standard Terminals

Figure	Part number	Wire size mm <sup>2</sup> (AWG)	Ø Insulation (mm)	For male (mm)	Din	Brass	Brass Sn	Steel Ni	Bronze	Bronze Pre-Sn	Bronze Sn	Material thickness (mm)	Winding number
						00	02	24	30	31	32		
Short Flag. rolling crimp													
	<b>5327.**</b>	<b>0,5-0,75</b> (20-18)	1,9-3,3	6,3x0,8	Esp	•	•	•	•		•	0,4	3500
	<b>5324.**</b>	<b>0,5-1,5</b> (20-16)				•	•	•	•		•		3000
	<b>5326.**</b>	<b>1-2,5</b> (18-14)	•	•		•	•		•	2000			
Short Flag. B crimping													
	<b>5329.**</b>	<b>0,5-1,5</b> (20-16)	1,9-3,3	6,3x0,8	Esp	•	•	•	•	•		0,4	3000
	<b>5330.**</b>	<b>1-2,5</b> (18-14)	2,7-3,8			•	•	•	•		2000		



## Male-female terminals

### Standard Terminals

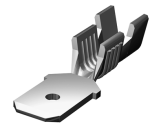
Figure	Part number	Wire size mm <sup>2</sup> (AWG)	Ø Insulation (mm)	For male (mm)	Brass	Brass Sn	Bronze	Bronze Sn	Material thickness (mm)	Winding number
					00	02	30	32		
	<b>5220.**</b>	<b>0,5-1</b> (20-18)	1,8-2,5	6,3x0,8	•	•	•	•	0,4	1500
	<b>5220T.**</b>				•	•	•	•		
	<b>5222.**</b>	<b>0,75-1,5</b> (18-16)	2,4-3,3		•	•	•	•		
	<b>5222T.**</b>				•	•	•	•		



## Males

### Males

Figure	Part number	Wire size mm <sup>2</sup> (AWG)	Ø Insulation (mm)	Tongue thickness (mm)	Din	Brass	Brass Pre-Sn	Brass Sn	Brass Ag	Brass Ni	Bronze	Bronze Pre-Sn	Material thickness (mm)	Winding number	
						00	01	02	03	04	30	31			
	Short male														
	<b>6420.**</b>	<b>0,75-1,5</b> (18-16)	2,4-3,3	0,8	Esp	•							0,8	7000	



## Males

### Males

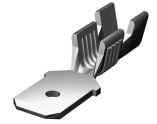


Figure	Part number	Wire size mm <sup>2</sup> (AWG)	∅ Insulation (mm)	Tongue thickness (mm)	Din	Brass 00	Brass Pre-Sn 01	Brass Sn 02	Brass Ag 03	Brass Ni 04	Bronze 30	Bronze Pre-Sn 31	Material thickness (mm)	Winding number	
0.4+0.4 mm short male															
	<b>6428.**</b>	<b>0,2-0,5</b> <small>(24-20)</small>	1,4-2,1	0,8	46248	•	•	•					0,39	8000	
	<b>6429.**</b>	<b>0,5-1</b> <small>(20-18)</small>	1,8-2,5			•	•	•							7500
	<b>6422.**</b>	<b>1-2,5</b> <small>(18-14)</small>	3-4,3			•	•	•	•	•	•	•		7000	
Special male															
	<b>6433.**</b>	<b>1-2,5</b> <small>(18-14)</small>	3-4,3	0,4	Esp	•	•						0,4	5000	

## Males

### Tab Housings

Figure	Part number	Ways	Dimensions	To terminal	Politiene Natural <b>00</b>	PA66V2 Natural <b>10</b>
	<b>26300**</b>	1	7.8-12-22	6422.00	<input checked="" type="checkbox"/>	<input type="checkbox"/>
	<b>26301**</b>	1	7.8-12-22	6422.00	<input type="checkbox"/>	<input checked="" type="checkbox"/>

## Males for connector

### Standard Terminals



Figure	Part number	Wire size mm <sup>2</sup> (AWG)	Ø Insulation (mm)	Tongue thickness (mm)	Din	Brass	Brass Pre-Sn	Brass Sn	Brass Ag	Bronze	Bronze Pre-Sn	Material thickness (mm)	Winding number
						00	01	02	03	30	31		
	With dimple hole												
	<b>6425.**</b>	<b>0,2-0,6</b> (24-20)	1,4-2,1	6,3x0,8	46343	•	•	•		•	•	0,4	6000
	<b>6427.**</b>	<b>0,5-1</b> (20-18)	1,5-2,1			•	•		•	•			
	<b>6426.**</b>		1,8-2,5			•	•	•	•	•			
	<b>6434.**</b>	<b>1-2,5</b> (18-14)	3-4,3			•	•	•	•	•	•		
<b>6440.**</b>	<b>2,5-6</b> (14-10)	3,8-5,1	•			•		•	•				
	Without hole												
	<b>6423.**</b>	<b>0,2-0,6</b> (24-20)	1,4-2,1	6,3x0,8	46343	•	•	•		•	•	0,4	6000
	<b>6421.**</b>	<b>0,5-1</b> (20-18)	1,5-2,1			•	•		•	•			
	<b>6424.**</b>		1,8-2,5			•	•	•	•	•			
	<b>6432.**</b>	<b>1-2,5</b> (18-14)	3-4,3			•	•	•	•	•	•		
<b>6438.**</b>	<b>2,5-6</b> (14-10)	3,8-5,1	•			•		•	•				
	6.3x0.4mm Special male												
	<b>6430.**</b>	<b>1-2,5</b> (18-14)	3-4,3	6,3x0,4	Esp	•	•					0,4	5000



## Males for connector

### Male Connectors

Figure	Part number	Ways	Dimensions	To terminal	PA66V2 Natural	PA66V2 Black	ABS Gray	PA66V0 Natural	PA66NF Natural	NO FLAME Natural	PANF Natural	Stanyl Natural	PAVONF Natural
<p>1 way Connector</p>	<b>26341**</b>	1	9,3-12-32	6426.00	•			•	•				
<p>2 ways Female Connector</p>													
<p>2 ways Connector</p>	<b>26342**</b>	2	13-15-32	6426.00	•			•	•				•
<p>T 2 ways connector</p>	<b>26377**</b>	2	20-12,5-32	6426.00	•	•							
<p>Polarized 2 ways connector</p>	<b>26373**</b>	2	13,1-15,2-32	6426.00	•								
<p>2 ways connector with locking</p>	<b>26376**</b>	2	13-15-30	6426.00	•								

## Males for connector

### Male Connectors

Figure	Part number	Ways	Dimensions	To terminal	PA66V2 Natural	PA66V2 Black	ABS Gray	PA66V0 Natural	PA66NF Natural	NO FLAME Natural	PANF Natural	Stanyl Natural	PAVONF Natural
	<b>26343**</b>	3	20-15,2-32	6426.00	•			•			•	•	•
3 ways connector													
	<b>26344**</b>	4	16,7-26,5-32	6426.00	•								
4 ways Connector													
	<b>26346**</b>	6	18-31,5-32	6426.00	•					•			
6 ways Connector													
	<b>26396**</b>	6 (3x2)	15,5-30,3-34,	6426.00			•						
6 ways 3x2 male Connector													
	<b>26348**</b>	8	18-41-32,5	6426.00	•								
8 ways Connector													

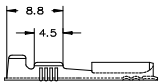
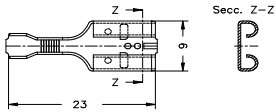
## Males for connector

### Male Connectors

Figure	Part number	Ways	Dimensions	To terminal	PA66V2 Natural	PA66V2 Black	ABS Gray	PA66V0 Natural	PA66NF Natural	NO FLAME Natural	PANF Natural	Stanyl Natural	PAVONF Natural
	11 way connector				10	15	28	30	40	40	40	50	60
	<b>26379**</b>	11	29-32,5-31	6426.00	•								
	Secondary Lock												
	<b>26345**</b>	4			•			•	•				
	8 ways connector with locking				10	15	28	30	40	40	40	50	60
	<b>26383**</b>	8	18-41-32,5	6426.00	•								
	6 ways connector with locking				10	15	28	30	40	40	40	50	60
	<b>26382**</b>	6	18-31,5-32	6426.00	•								

## Receptacles

### Standard Terminals

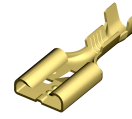
Figure	Part number	Wire size mm <sup>2</sup> (AWG)	Ø Insulation (mm)	For male (mm)	Brass	Brass Sn	Bronze	Bronze Sn	Material thickness (mm)	Winding number
					00	02	30	32		
 	<b>4460.**</b>	<b>0,5-1</b> (20-18)	1,8-3,3	7,7x0,8	•	•	•	•	0,4	5500



## Receptacles for connector

### Standard Terminals

Figure	Part number	Wire size mm <sup>2</sup> (AWG)	Ø Insulation (mm)	For male (mm)	Brass	Brass Sn	Bronze	Bronze Sn	Material thickness (mm)	Winding number
					00	02	30	32		
	<b>4360.**</b>	<b>0,5-1</b> (20-18)	1,8-3,3	7,7x0,8	•	•	•	•	0,4	5000



## Flags for connector

### Standard Terminals

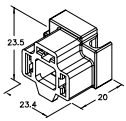


Figure	Part number	Wire size mm <sup>2</sup> (AWG)	Ø Insulation (mm)	For male (mm)	Din	Brass	Brass Sn	Brass 85/15	Brass 85/15 Sn	Bronze	Bronze Sn	Material thickness (mm)	Winding number
						00	02	10	12	30	32		
	<b>5360.**</b>	<b>0,75-1,5</b> (18-16)	1,7-2,4	7,9x0,75	Esp			•	•	•	•	0,45	3000
	<b>5362.**</b>	<b>1-2,5</b> (18-14)	3-4,3			•	•	•	•				
	For connector 2805310/2805510												
	<b>5366.**</b>	<b>0,5-1</b> (20-18)	1,6-2,3	7,9x0,75	Esp	•	•			•	•	0,4	3500
<b>5364.**</b>	<b>1-2,5</b> (18-14)	3-4,3	46340			•	•			•	•		

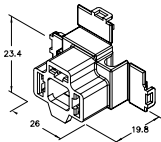
## Flags for connector

### Flag Receptacle Holder Connectors

Figure	Part number	PA66V2 Natural	PA66V2 Black
	<b>10</b>		
	<b>15</b>		



**28053\*\***



Secondary Lock

**28055\*\***



## Receptacles

### Standard Terminals

Figure	Part number	Wire size mm <sup>2</sup> (AWG)	Ø Insulation (mm)	For male (mm)	Din	Brass	Brass Sn	Bronze	Bronze Sn	Material thickness (mm)	Winding number	
						00	02	30	32			
	L=27. 18-14 AWG Wire size											
	<b>4480.**</b>	<b>1-2,5</b> (18-14)	2,1-3,1	9,5x1,2	Esp	•	•	•	•	0,5	3000	
	L=25. 14-10 AWG											
	<b>4478.**</b>	<b>2,5-6</b> (14-10)	3,8-5	9,5x1,2	46247	•	•	•	•	0,5	3000	
	L=27. 12-10 and 10-8 AWG											
	<b>4482.**</b>	<b>4-6</b> (12-10)	3,8-5,1	9,5x1,2	Esp	•	•	•	•	0,5	2500	
<b>4484.**</b>	<b>6-10</b> (10-8)	4,6-6,6	•			•	•	•	2000			

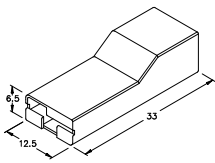




## Receptacles

### Receptacle housings

Figure	Part number	PA66V2 Natural
	<b>10</b>	



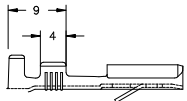
**29510\*\***



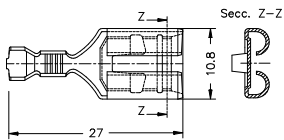
## Receptacles for connector

### Standard Terminals

Figure	Part number	Wire size mm <sup>2</sup> (AWG)	Ø Insulation (mm)	For male (mm)	Din	Brass <b>00</b>	Brass Sn <b>02</b>	Bronze <b>30</b>	Bronze Sn <b>32</b>	Material thickness (mm)	Winding number
	<b>4380.**</b>	<b>1-2,5</b> (18-14)	2,1-3,1	9,5x1,2	Esp	<input checked="" type="checkbox"/>	<input checked="" type="checkbox"/>	<input checked="" type="checkbox"/>	<input checked="" type="checkbox"/>	0,5	3000

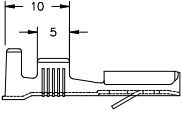


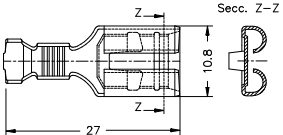
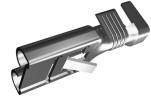
L=27. 18-14 AWG Wire size



## Receptacles for connector

### Standard Terminals

Figure	Part number	Wire size mm <sup>2</sup> (AWG)	Ø Insulation (mm)	For male (mm)	Din	Brass	Brass Sn	Bronze	Bronze Sn	Material thickness (mm)	Winding number
						00	02	30	32		
	L=27. 12-10 and 10-8 AWG										
	<b>4382.**</b>	<b>4-6</b> (12-10)	3,8-5,1	9,5x1,2	Esp	•	•	•	•	0,5	2500
<b>4384.**</b>	<b>6-10</b> (10-8)	4,6-6,6	•			•	•	•	2000		



## Males

### 2.8 mm male

Figure	Part number	Ø (mm)	Din	Brass	Brass Sn	Material thickness (mm)	
				00	02		
	0° 2.8 mm male						
	<b>19901.**</b>	2,2	46342	•	•	0,5	
	<b>19905.**</b>			•	•	0,8	
	<b>19903.**</b>	3,2		•	•	0,5	
<b>19907.**</b>	•			•	0,8		
	2.8 mm male 45°						
	<b>19909.**</b>	2,2	46342	•	•	0,5	
	<b>19913.**</b>			•	•	0,8	
	<b>19911.**</b>	3,2		•	•	0,5	
<b>19915.**</b>	•			•	0,8		
	2.8 mm Male 90°						
	<b>19917.**</b>	2,2	46342	•	•	0,5	
	<b>19921.**</b>			•	•	0,8	
	<b>19919.**</b>	3,2		•	•	0,5	
<b>19923.**</b>	•			•	0,8		
	2.8 mm PCB flag male. Angled						
	<b>19956.**</b>			•	•	0,5	
	<b>19957.**</b>			•	•	0,8	
	2.8 mm flag PCB male.						
	<b>19958.**</b>			•	•	0,5	
	<b>19959.**</b>			•	•	0,8	

## Males

### 2.8 mm male

Figure	Part number	Ø (mm)	Din	Brass	Brass Sn	Material thickness (mm)
				00	02	
	2.8 mm PCB male. Large pin 1.4 mm diam			•	•	0,5
	<b>19960.**</b>			•	•	0,8
	2.8 mm PCB Male Short pin for 1 mm hole			•	•	0,5
	<b>19962.**</b>			•	•	0,8
	2.8 mm PCB Male Short pin for 1 mm hole			•	•	0,5
	<b>19963.**</b>			•	•	0,8

## Males

### 4.8 mm Males

Figure	Part number	Ø (mm)	Din	Material		Material thickness (mm)
				Brass 00	Brass Sn 02	
	0° 4.8 mm male					
	<b>19925.**</b>	3,2	46342	•	•	0,5
	<b>19929.**</b>			•	•	0,8
	<b>19927.**</b>	4,2		•	•	0,5
<b>19931.**</b>	•			•	0,8	
	45° 4.8 mm Male					
	<b>19933.**</b>	3,2	46342	•	•	0,5
	<b>19937.**</b>			•	•	0,8
	<b>19935.**</b>	4,2		•	•	0,5
<b>19939.**</b>	•			•	0,8	
	90° 4.8 mm male					
	<b>19941.**</b>	3,2	46342	•	•	0,5
	<b>19945.**</b>			•	•	0,8
	<b>19943.**</b>	4,2		•	•	0,5
<b>19947.**</b>	•			•	0,8	
	PCB 4.8 mm Male					
	<b>19954.**</b>			•	•	0,5
<b>19955.**</b>	•			•	0,8	
	PCB 4.8 mm Male on reel					
	<b>9814.**</b>	1,40		•	•	0,5
	<b>9815.**</b>			•	•	0,8
	<b>9812.**</b>	1,75		•	•	0,5
<b>9813.**</b>	•			•	0,8	

## Males

### 6.3 mm Male

Figure	Part number	Ø (mm)	Din	Brass	Brass Pre-Sn	Brass Sn	Steel Ni	Material thickness (mm)	
				00	01	02	24		
	0° 6.3 mm Male								
	<b>1990.**</b>	3,2	46342	•		•		0,8	
	<b>1992.**</b>	4,2		•		•			
<b>1994.**</b>	5,2	•			•				
	45° 6.3 mm Male								
	<b>1996.**</b>	3,2	46342	•		•		0,8	
	<b>1998.**</b>	4,2		•		•			
<b>19910.**</b>	5,2	•			•				
	90° 6.3 mm Male								
	<b>19912.**</b>	3,2	46342	•		•		0,8	
	<b>19914.**</b>	4,2		•		•			
<b>19916.**</b>	5,2	•			•				
	6.3 mm stepped male								
	<b>19918.**</b>	3,2	Esp	•		•		0,8	
	<b>19920.**</b>	4,2		•		•			
<b>19922.**</b>	5,2	•			•				
	45° 6.3mm Male. 9.2 mm plate								
	<b>19924.**</b>	3,2	Esp	•		•		0,8	
	<b>19926.**</b>	4,2		•		•			
<b>19928.**</b>	5,2	•			•				

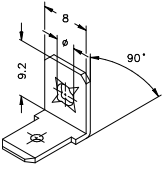
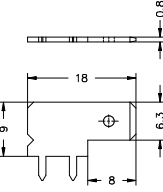
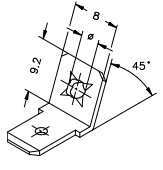
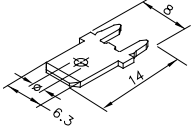
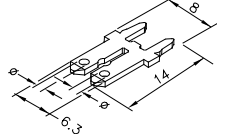
## Males

### 6.3 mm Male

Figure	Part number	Ø (mm)	Din	Brass	Brass Pre-Sn	Brass Sn	Steel Ni	Material thickness (mm)
				00	01	02	24	
90° 6.3 mm Male . 9.2 mm Plate								
	<b>19930.**</b>	3,2	Esp			•		0,8
	<b>19932.**</b>	4,2		•		•		
	<b>19934.**</b>	5,2		•		•		
0° 6.3 mm male with hexagonal hole								
	<b>19936.**</b>	4,1	Esp	•		•		0,8
	0° 6.3 mm male with special hole							
	<b>19938.**</b>	3,2	Esp	•		•		0,8
	<b>19940.**</b>	4,2		•		•	•	
6.3 mm PCB male								
	<b>19971.**</b>	1,65		•		•		0,8

## Males

### 6.3 mm Male

Figure	Part number	Ø (mm)	Din					Material thickness (mm)
				Brass 00	Brass Pre-Sn 01	Brass Sn 02	Steel Ni 24	
	90° 6.3 mm male with special hole							
	19946.**	3,2	Esp	•		•		0,8
19948.**	4,2	•			•			
	6.3 mm flag PCB male							
	19965.**		Esp		•	•		0,8
	45° 6.3 mm male with special hole							
	19942.**	3,2	Esp	•		•		0,8
19944.**	4,2	•			•			
	PCB 6.3 mm Male on reel							
	9820.**	1,65		•		•		0,8
	PCB 6.3 mm (2.8x2) Male on reel split							
	9822.**	1,3		•		•		0,5
9823.**			•		•		0,8	