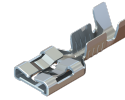


**Up TP2**

## Receptacles

Low insertion



Figure

Part number	Wire size mm <sup>2</sup> (AWG)	∅ Insulation (mm)	For male (mm)	Brass <b>00</b>	Brass Pre-Sn <b>01</b>	Steel Ni <b>24</b>	Material thickness (mm)	Winding number
<b>4837.**</b>	<b>0,5-1,5</b> (20-16)	2-3,3	6,3x0,8	•	•	•	0,4	8000
<b>4838.**</b>	<b>1-2,5</b> (18-14)	2,5-3,7		•	•	•		

